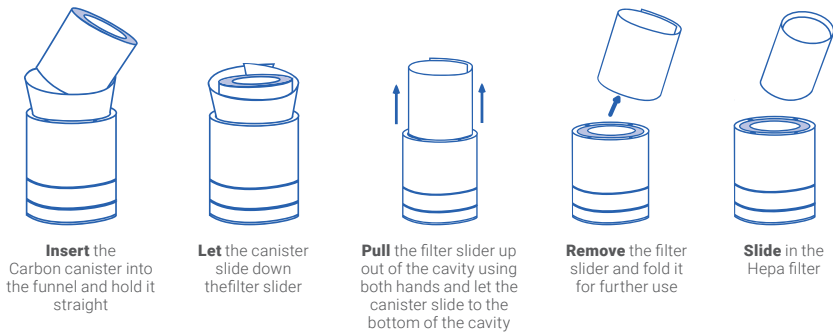
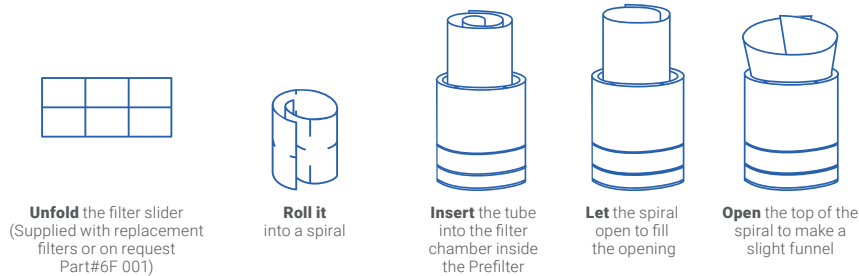
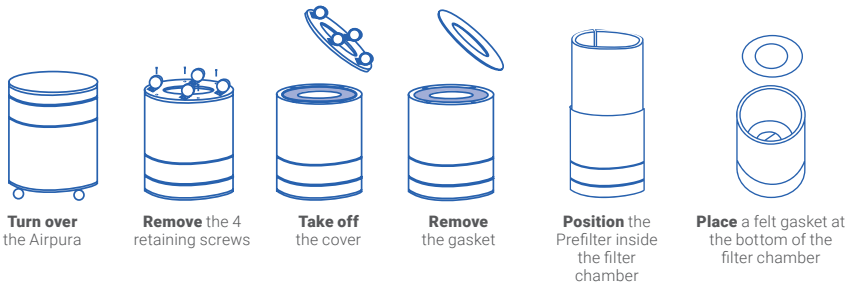
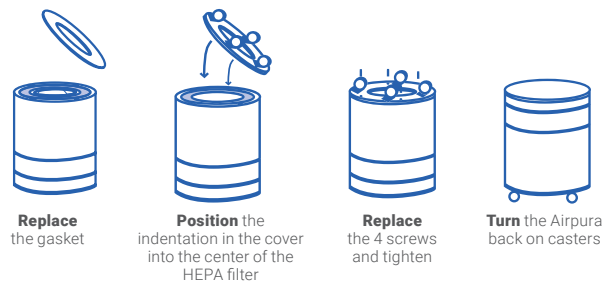


## To open the filter chamber



## To close the filter chamber



**Airpura**   
AIR PURIFIERS

# P600

OPERATING  
&  
FILTER REPLACEMENT  
DIRECTIONS

# TO BEGIN USING YOUR AIRPURA

**Inspect the exterior of your Airpura** to verify there is no damage from shipping. If any damage is noted, please follow the instructions from the distributor returns policy.

**Wipe the unit** with a damp cloth to remove any dust from packaging

**Plug the unit** into a regular grounded 110 volt outlet

**Turn on the unit** to MAX and allow it to run for at least 30 minutes

**Set the variable speed** control to the level you wish

The most efficient way to use your Airpura for regular air quality maintenance is to run it at a low speed **24 hours a day 7 days a week.**

**Always maintain a humidity level of 35% or less in your home to ensure the unit is operating at optimal levels. Overly humid conditions can have an adverse effect on the performance of the carbon. When using purifier with a dehumidifier, please keep dehumidifier at least 6 feet away.**



## FILTER MAINTENANCE AND REPLACEMENT

### The Prefilter

Can be vacuumed from the exterior of the unit once a month or more often. Should be replaced at least after 12 months of use

### To vacuum the Prefilter

Use the brush attachment on your vacuum cleaner. Vacuum slowly around the mesh surface of the filter chamber

## IMPORTANT SAFETY NOTE

Please ensure air purifier is turned OFF when plugging into a power source. Failure to do so may result in motor potentially stalling and/or burning.

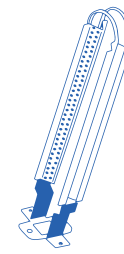
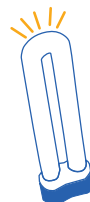
## Replacing the UV bulb

**Open** the filter chamber following the instructions

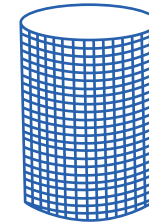
**Pull** the bulb upward out of the connector

**Push** the replacement bulb firmly into the connector

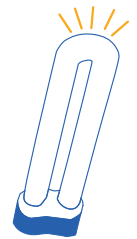
**Close** the filter chamber following instructions



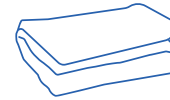
**Titanclean**  
18-20 months



**HEPA 600RVHU Filter**  
(99.97% efficient @ 0.3 Microns)  
3 to 5 years



**UV bulb**  
18-20 months



**Poly Prefilter 600 2-pack**  
12 months

**P614:** HEPA 14 Filter  
(99.99% efficient @ 0.3 Microns)  
**P600+:** HEPA 600 Filter w/ TiO2  
(99.97% efficient @ 0.3 Microns)  
**P614+:** HEPA 14 Filter  
(99.99% efficient @ 0.3 Microns) + TiO2



**18 lbs, Coconut Shell Carbon Filter (100% Blend)**  
24 months

## Technical specifications

### Particle removal

Over 100 ft<sup>2</sup> true HEPA  
(Measured only 1 side)  
12 pleats per inch  
Pleats warm rolled with separators

### Activated carbon filter

18 lbs carbon filter  
13"H X 13.25"OD X 9"ID

### Carbon Bed

2" deep X 570 sq. surface

### Air Flow 560 cfm

More cfm than any other home unit available

### Prefilter

570 in<sup>2</sup> x 1 in

### Housing

Powder coat steel

### Size

23 in x 15 in

### Weight

35 lbs total

### Watts

120 on high / 40 on low

### Sound Level

28.1 db on low (at 6 feet)  
62.3 db on high (560 cfm)  
(Room level 25.1 db)

### Voltage options

115 or 220 volts



## Air purifiers models and filter configurations

	Prefilter	Particulate	Carbon
<b>Alternates</b>	Cotton Prefilter TarBarrier Prefilter		18 lbs anthracite carbon filter (100%)
<b>Upgrade</b>		HEPA 14 Filter (99.99% efficient @ 0.3 Microns) ULPA Filter (99.9999% efficient @ 0.1 Microns)	18 lbs impregnated carbon 18 lbs carbon (17% potassium permanganate carbon, 83% coconut shell)